



Leap
into
science
Engineered by
THE FRANKLIN INSTITUTE



THE
FRANKLIN
INSTITUTE

October Community Meeting

October 17, 2018



Leap
into
science
Engineered by
THE FRANKLIN INSTITUTE



What events or programs are you gearing up for this fall?




Leap
into
science
Engineered by
THE FRANKLIN INSTITUTE

Agenda



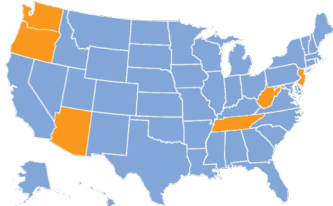
- Site Updates
- Reflections from calls and observations
- General Updates
- Evaluation Update
- Reminders
- Questions/Discussion



Leap
into
science
Engineered by
THE FRANKLIN INSTITUTE

SLT Updates

- Arizona
- Tennessee
- New Jersey
- Washington
- Oregon
- West Virginia





Leap
into
science
Engineered by
THE FRANKLIN INSTITUTE

Arizona



Hannah Stewart



Donna Throckmorton



Alyson Walker





Leap
into
science
Engineered by
THE FRANKLIN INSTITUTE

Tennessee



Elizabeth Tallman



Sindy Schade



Katie Woodward



New Jersey

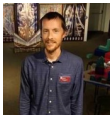
Leap
into
science
Engineered by
THE FRANKLIN INSTITUTE



Doug Baldwin



Sharon Rawlins



Ryan Reedell



Washington

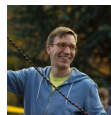
Leap
into
science
Engineered by
THE FRANKLIN INSTITUTE



Carolyn Petersen



Bill Wells



Nick Spicher

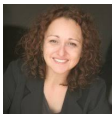


Gwendolyn Haley



Oregon

Leap
into
science
Engineered by
THE FRANKLIN INSTITUTE



Rachel Kessler



Greta Bergquist

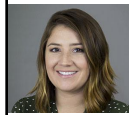


Dee Wetzel

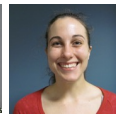


West Virginia

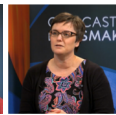
Leap
into
science
Engineered by
THE FRANKLIN INSTITUTE



Autumn Stracher



Sophie Knudsen



Sarah Palfrey



Cree Lahti



Mollie Toppe



Shannon Cottril



Reflections from calls and observations

Leap
into
science
Engineered by
THE FRANKLIN INSTITUTE

Reflections


Leap
into
science
Engineered by
THE FRANKLIN INSTITUTE

Highlights

- Strong recruitment
- Positive feedback on trainings
- Teams are collaborating
- Everyone loves the kits

Challenges

- Long gap between NLI and trainings
- Lack of comfort with various systems (events vs. Leap into Science vs. The Connectory)
- Follow up is really hard



General Updates

1. ASTC Presentations
2. Balancing Girl on website



Evaluation Update

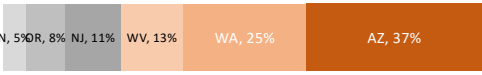
Evaluation update

- ✓ Completed **five** out of six **site visits**.
 - Arizona, New Jersey, Oregon, Pennsylvania, & Washington
- ✓ As of Tuesday, October 16th : **132** educator post-training surveys collected.


Please encourage educators to complete post-training surveys.

Educator post-training survey results

- Responses collected as of October 1st
- Results from **106 surveys**
- Most surveys represent **Washington** and **Arizona**

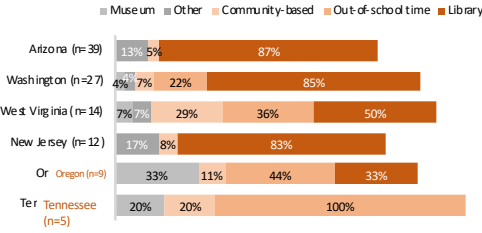


Overall, **73%** of respondents indicated they work in **libraries**.* (n=106)



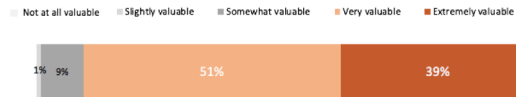
*Since respondents could choose multiple sectors, percentages add up to > than 100%.

Library staff were **not the majority** of respondents in **all states**.*



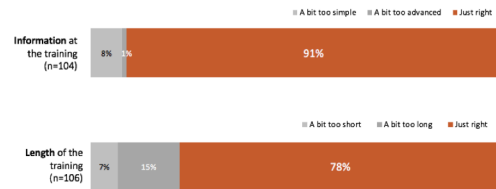
*Since respondents could choose multiple sectors, percentages add up to > than 100%.

90% of respondents found their training **very or extremely valuable**.* (n=105)

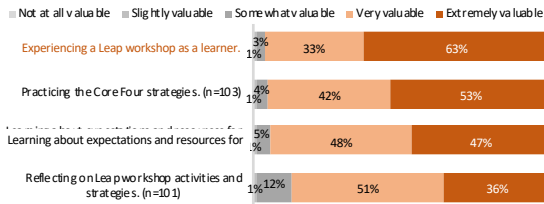


*No respondents selected not at all valuable.

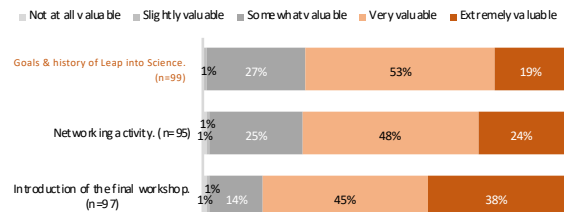
91% of respondents thought the training **information** was just right and 78% thought the training **length** was just right.



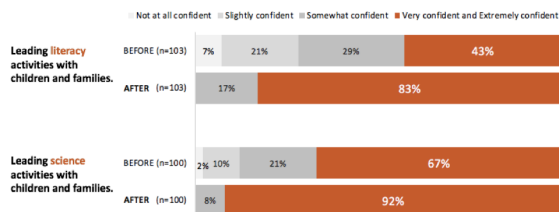
The **most valuable** training experience was experiencing the Leap workshop as a learner. (n=106)



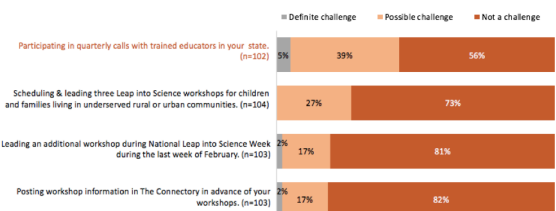
The **least valuable** training experience was hearing about the goals and history of Leap.



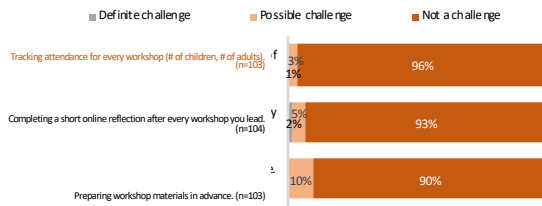
Respondents indicated an **increase** in confidence in leading **literacy** activities and **science** activities.



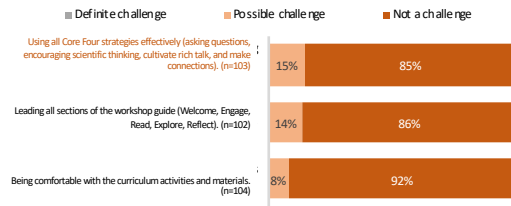
Respondents foresaw their **top logistical challenge** as participating in quarterly calls.



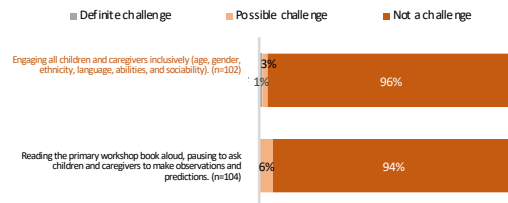
Respondents foresaw **few challenges** in tracking attendance.



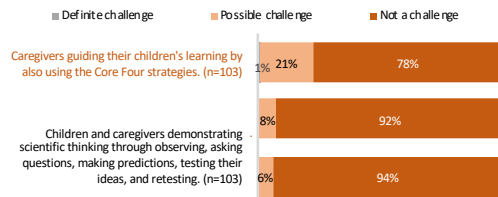
Respondents foresaw their **top facilitation challenge** as using all Core Four strategies effectively.



Respondents foresaw **few challenges** in engaging all participants inclusively.



The **top challenge** respondents foresaw for their workshop participants was using the Core Four strategies.



Respondents **suggested**:

- **Additional training resources:**
 - A video showing an entire workshop.
 - Examples of other vocabulary words.
- **Books:** Wider book selection like short chapter books or a reading list.
- **Take home resources for caregivers:** Guidance on continuing core four strategies.

Respondents were **excited** about:

- Families **using science to engage with children** in a fun and hands-on way.
- Bringing **science into their work** with families.
- Receiving information on **additional curriculum** in future years.
- Bringing "this kind of learning" to **underserved populations**.

Reminders

Reminders/Updates

- Workshops in The Connectory
- Educator List by State
- Workshop Reflection Forms online



Next Community Meeting

December 6, 2018

11am Pacific/ 2pm Eastern



Questions?