

Welcome!

- Please introduce yourself, organization, and Collaborative in the chat box.
- Does your Collaborative have community college representation on your Leadership Team or Champions Board?



April 10, 2019

Agenda

- Speaker Introductions
- Engaging STEM Faculty at Community Colleges
- Community College Leadership: A Partner in Equity
- Facilitated Discussion
- Successes and Challenges
- Updates and Closing



Speakers



Dr. Ricardo Romanillos
Director of Professional
Learning, National Alliance
for Partnerships in Equity
(NAPE)



Dr. Esperanza Zenon
Associate Professor,
River Parishes Community
College (RPCC)



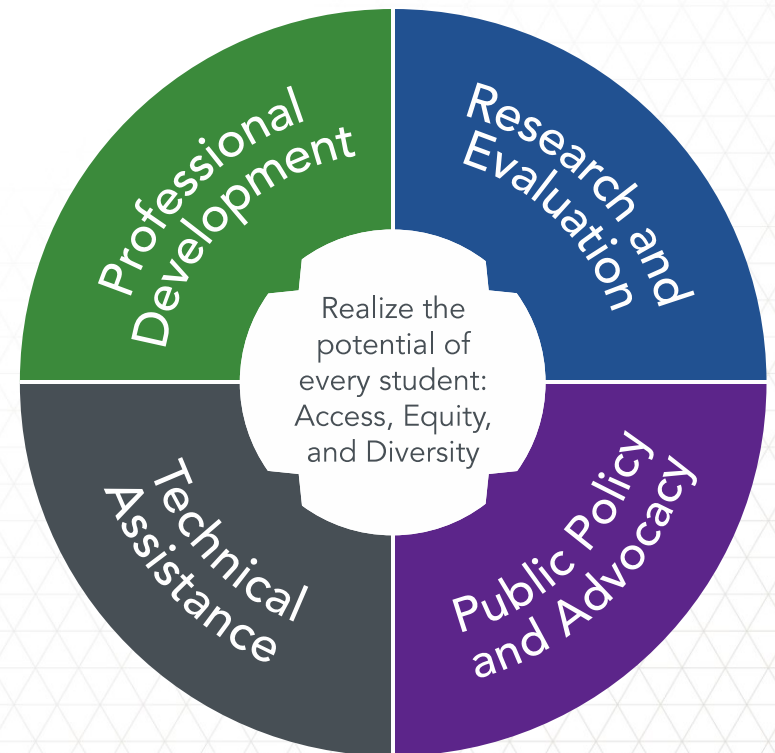
Sean Elo
Trustee,
San Diego
Community
College Board

Mission

We build **educators' capacity** to implement **effective solutions** for increasing student **access**, educational **equity** and workforce **diversity**.



N A P P E
National Alliance for
Partnerships in Equity





COMMUNITY & TECHNICAL COLLEGES

- Serving an increasingly diverse student population
- America's 2nd chance institution



Collaborative Engagement from a Community College Faculty Perspective

Esperanza Zenon, PhD
Associate Professor of
Physical Science
www.rpcc.edu



Community College Collaborative Engagement

- ☐ Time
- ☐ Participation
- ☐ Support
- ☐ Knowledge

Time

- ☐ Course Load
- ☐ Service Assignments
- ☐ Competing Requirements
- ☐ **It is Possible**

Participation

- ☐ Commitment
- ☐ Motivation
- ☐ Incentives
- ☐ **It is Possible**

Support

- ☐ Leadership Unaware
- ☐ Financial Constraints
- ☐ Return on Investment
- ☐ **It is Possible**

Knowledge

- ☐ Unaware of Organizations
- ☐ Networking Limited
- ☐ Infrastructure Limited
- ☐ **It is Possible**

EESTEM II Grant: 2016-2019

- Advanced Technological Education (NSF)
- Professional learning for STEM faculty at 15 community and technical colleges
- 4-Day Institute, Professional Learning Communities, and Capstone Research
- Increases in student performance, course retention, and student interest or selection of a STEM degree (Schmitz, Ebersole, Morrell, & Parker, 2018)

“using the model has been so powerful in looking at how do we create this professional learning community... I just feel like the model is just phenomenal for you know making sure that there is that continuity in that ongoing rather than just like a four-day training and then you just don’t ever come back to it .”

Year 1 Participant



Questions?

Esperanza Zenon: ezenon@rpcc.edu

Ricardo Romanillos: rromanillos@napequity.org



Community College Leadership: A Partner in Equity



NATIONAL GIRLS COLLABORATIVE PROJECT



NGCP National Webinars

[Impact Discussion: The Challenges and Strategies of Reaching Hard to Reach Girls with STEM Education](#) on April 16 at 10:00AM Pacific/1:00PM Eastern



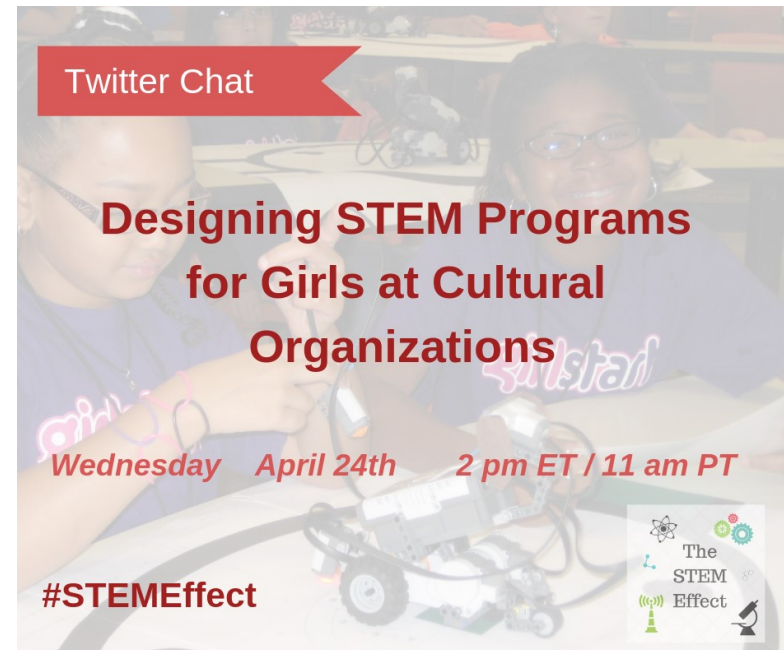
AMERICAN INDIAN SCIENCE
AND ENGINEERING SOCIETY

[Microsoft Philanthropies and Inclusive Computer Science Education](#) on April 23 at 11:00AM Pacific/2:00PM Eastern

 Microsoft
Philanthropies

General NGCP Updates Continued

- Twitter Chat: “Designing STEM Programs for Girls at Cultural Organizations” on April 24 at 11:00AM PST/2:00PM EST using #STEMEffect
- The Connectory and VolunteerMatch promotion for April



Next Collaborative Leadership Teams Meeting: May 8, 2019

