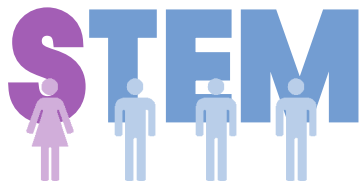


The State of Girls and Women in STEM

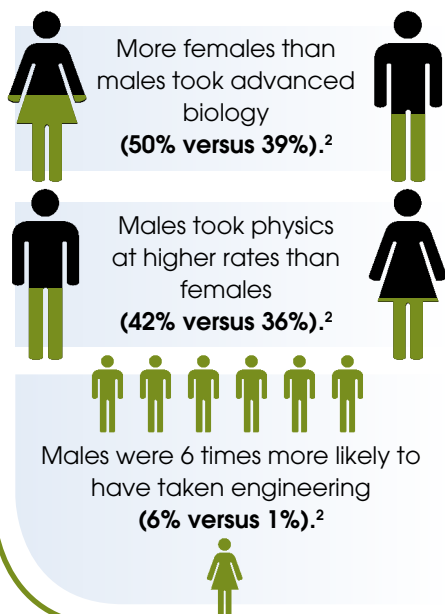
June 2013

K-12 Education

Girls and boys do not significantly differ in their abilities in mathematics and science, but do differ in their interest and confidence in STEM subjects. Male students are over three times more likely to be interested in STEM majors and careers, compared to female students.¹



In 2009, girls and boys earned credits in advanced **mathematics and science** at similar rates. However, gender differences in advanced coursetaking varied by subject:

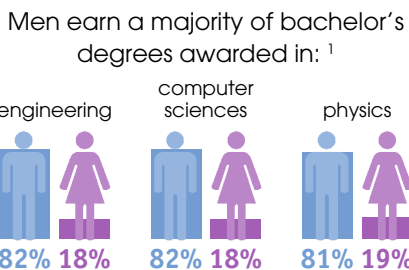


Higher Education

The rates of science and engineering (S&E) **coursetaking for women shift at the undergraduate level** and gender disparities begin to emerge.



Within S&E, men and women tend to study different fields.



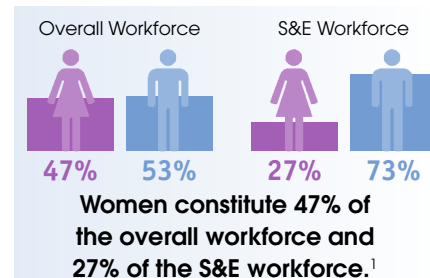
Women earn a majority of bachelor's degrees in psychology, biological sciences, and social sciences.¹

Underrepresented minority women make up **16%** of the population, but only earn:

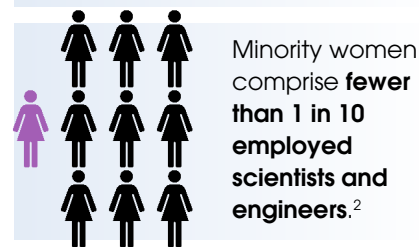
- **3%** of bachelor's degrees in engineering
- **5%** of bachelor's degrees in computer sciences
- **6%** of bachelor's degrees in physical sciences²

STEM Workforce

Women remain underrepresented in the science and engineering workforce, with the **greatest disparities occurring in engineering, computer sciences, and physical sciences.**



Female scientists and engineers are concentrated in different occupations than men, with relatively high shares of women in the social sciences (53%) and biological and medical sciences (51%) and **relatively low shares in computer and mathematical sciences (26%), and engineering (13%).¹**



¹ STEMconnector & My College Options. (2013). *Where are the STEM Students? What are their Career Interests? Where are the STEM Jobs?*

² National Science Board. (2012). *Science and Engineering Indicators 2012*. Arlington VA: National Science Foundation (NSB 12-01).

¹ National Science Board. (2012). *Science and Engineering Indicators 2012*. Arlington VA: National Science Foundation (NSB 12-01).

² National Science Foundation, National Center for Science and Engineering Statistics. (2013). *Women, Minorities, and Persons with Disabilities in Science and Engineering: 2013*. Special Report NSF 13-304. Arlington, VA.

¹ National Science Board. (2012). *Science and Engineering Indicators 2012*. Arlington VA: National Science Foundation (NSB 12-01).

² National Science Foundation, National Center for Science and Engineering Statistics. (2013). *Women, Minorities, and Persons with Disabilities in Science and Engineering: 2013*. Special Report NSF 13-304. Arlington, VA.

